

*Believe and  
Achieve*

**Nutley Church of England Primary School**

Prospectus 2024/2025



## From the Headteacher

---



Dear Parent/Carer,

Thank you for your interest in Nutley Church of England Primary School.

It has been my absolute privilege to lead this wonderful school since September 2022.

In our school the children, their parents, staff and governors work together as 'Team Nutley' to create an environment where each child will achieve their potential. We offer high quality teaching and learning, which encourages and stimulates the children to be independent, well-motivated and happy to learn. One of the keys to being a successful small school is that each child here is known and is treated as an individual.

Above all, we want our children to feel safe and secure and we place a high priority on pastoral care. Good links between you, the parents, and the staff are a vital part of this care, and we are always ready to talk with you about your child. There will also be many opportunities for you to share in your child's life at Nutley CE School.

Please come and see our lovely little school in action – you can either call our office to arrange a visit or attend one of our open mornings.

We look forward to seeing you.

Yours sincerely,

A handwritten signature in blue ink that reads "E. Robinson".

Mrs Emma Robinson, Headteacher

## Our Mission Statement



*At our school we believe that everyone is an individual.*

*We encourage all to reach their full potential in a happy, safe and caring environment.*

*Within our community, we provide a foundation for enthusiastic lifelong learning, based on Christian values.*

## Contents

Our School – Church and Family	2	School Day	11
Learning and Growing	3	Class Organisation	11
Assessment	3	Easy Parking	11
School Library	4	Attendance	12
School Council	4	Illness	12
Wider Opportunities	4	Health Matters	12
Forest School	5	Uniform	13
Moving On	6	Results	14
Meeting Parents	6	Term Dates	15
Behaviour and Discipline	6	Nutley CE School Creed	15
Curriculum	7	Contact	15
Admissions	10		

*Believe and Achieve*

*“I have come so they may have life and have it to the full”*

*John 10:10*



## Our School – Church and Family



Our school was built in 1853 as a Voluntary Controlled Church of England School. Together with the Church of St James the Less it has been at the heart of the village community for 169 years. The school has a strong Christian ethos and a link with the church is evident in all it does. Christian symbols are evident throughout the building and displays are regularly linked to stories from the Bible. Though as a school, we promote the values of the Christian faith, we recognise that some of our children come from other religions and cultural backgrounds and we respect their beliefs.

*“Inspirational collective worship and high quality religious education”*

The school holds services in the church throughout the year, including Harvest Festival, Christingle, Easter and the end of year Leavers’ Service. Our Vicar is a school governor and visits the school regularly to lead whole school worship for the children. As a school, we participate in local events, such as the Nutley village fete, distribute Harvest gifts to the Uckfield food bank and contribute a report of school activities to the monthly Nutley Parish News.

In this way, the children learn the importance of working together with the church as part of the local community.

### St James the Less Church



### Collective Worship

Collective Worship takes place in school every day, either the whole school meets or there are House or class assemblies. The Headteacher, staff, pupils and visitors participate in these worship times as well as our local vicar. Throughout the year, parents, governors

and friends of the school are invited to share and celebrate the children’s achievements during special class assemblies.

In Friday assemblies, we congratulate children who have made particular efforts with their work, behaviour or who have shown special kindness to others. Parents are invited to share this special time with us.

## Diocese Inspection March 2018

This inspection judged our school as **Outstanding**:

*“Inspirational collective worship and high quality religious education (RE), inclusive of biblical teaching, major world faiths and national and global events ensure pupils’ outstanding spiritual, moral, social and cultural development.”*

## Uckfield Town Schools’ Alliance

Our school is a member of the Uckfield Town Schools’ Alliance (UTSA), a group of eight schools in the Uckfield area: Manor Primary, Rocks Park, Harlands, St Philips, Little Horsted, Holy Cross and Uckfield College. The Alliance promotes collaboration in many ways including sporting tournaments and other activities giving the children the opportunity to meet and befriend others from the wider East Sussex school community. The Alliance also provides teaching staff with benefits that include moderation of children’s work and staff training opportunities.



## Learning and Growing

‘Every Child Matters’ is a principle that is fundamental to all that takes place in Nutley CE School, where the pupils are known individually to all members of the teaching staff. Ofsted inspected our school in June 2021 and graded the school **GOOD**.

Key findings of the report from our Ofsted Inspection (2021) state:

*“Leaders want the very best for pupils at this small village school. They aspire for pupils to leave with the knowledge, skills and values that they need for the future. Pupils are eager to meet adults’ high expectations of them. There is a strong sense of community spirit, which is underpinned by the school’s Christian ethos. Everyone is proud to be part of ‘Team Nutley’.”*

## Assessment

The children work towards targets and individual learning goals and their progress is continually monitored by teacher assessment, with their attainment recorded regularly. At the end of Year 6, pupils take National Curriculum Tests.

When a child is identified as more able in any area/s of the curriculum (maths or music, for example), we ensure that suitable provision is made for that child’s learning.

Some children have Special Educational Needs or disabilities and our aim is to provide sufficient support, with individual or small group tuition, to enable the children to achieve their potential. The progress of the children is carefully monitored by the Special Needs and Disabilities coordinator within the school.





## School Library

---

Our library was opened by 'Old Bear' author, Jane Hissey.

With over 3,000 books on its shelves, our 'Jolly Tall' library allows the children to access a wide range of stimulating reading material, both fiction and non fiction. We have recently had a library update and have many new books, which have been chosen to engage all readers.

## School Council

---

*"Pupils achieve well in English and mathematics"*

The School Council gives the children the opportunity to voice their opinions on how the school operates and make suggestions for possible improvements. It is also a means of involving the children in organising special events, in particular fund-raising for charity. Each year the whole school elects four candidates from Year 6 to be their school councillors, who meet regularly and act as a link between pupils, staff and governors.

Councillors' comments on Nutley CE School:

*"We discover something new every day."*

*"At Nutley CE School we all look after each other."*

## Wider Opportunities

---



At Nutley CE School we offer our pupils many other activities to broaden the scope of the curriculum and for the children to widen their experience. These include: school visits, visitors to school e.g. dance demonstrations, music performances and speakers from other organisations. We are extremely proud to offer our children the Forest School experience through structured sessions in the Ashdown Forest.

Every year, we organise a residential visit for Years 5 and 6 when they experience a range of outdoor pursuits and group activities. These trips are greatly enjoyed and they are also a valuable learning experience and the opportunity to develop independence, teamwork and resilience.

There is a wide selection of after-school clubs for the children to join, including creative activities and sports clubs. The children also have the opportunity to learn a musical instrument with specialist teachers from the East Sussex Music Service. The school's talents and skills are showcased in class assemblies and singing/drama productions, which are important for developing the children's self confidence.

*"The school provides aptly for their spiritual, moral, social and cultural development"*

## Forest School

We are proud to be a Forest School. This means we are able to offer structured sessions on the Ashdown Forest led by a qualified Forest School Leader. The children immerse themselves in the local forest and participate in a range of hands-on learning. The children are able to make links in their learning across the curriculum areas which cannot always be achieved in the classroom. Forest School also develops children's social and communication skills which are key aspects of the whole child's learning at Nutley CE School.





## Moving On

We work closely with pre-schools to make sure that new children feel confident and settle easily when they start in Reception at Nutley CE Primary School. As the end of their time at our school approaches, Year 6 pupils are offered a 'Taster Day' at their chosen secondary school to help them adjust to life and study in a much bigger school environment and we engage with all feeder secondary schools to ease transition for all pupils.

## Meeting Parents

The best education in school depends on strong links. The class teachers and headteacher are always ready to discuss any concerns you may have. The weekly newsletter gives up-to-date information on all that is happening in the school. At the start of the school year there is a 'Meet the Teacher' session which gives information about your child's class. We also arrange consultation times for parents/carers to meet with the class teachers and learn of their child's progress and at the end of the summer term there is a written report for each child.

## Behaviour

Mutual respect, courtesy and good discipline are expected in all areas of school life. Good behaviour is positively reinforced through our Golden Rules. Rules are simple and concerned principally with safety and the development of good manners and courtesy.

We base our Behaviour Policy on a positive approach. Parents will be contacted if their child's behaviour is of concern so that we can discuss the situation and work together towards a solution.

*"Pupils behave impeccably at all times. They are polite and respectful to each other as well as to adults. Everyone understands and follows the 'golden rules'. Pupils are encouraged to be gentle, kind, helpful, listen, honest, work hard, and look after property"*



## Curriculum

---

Teaching and learning is based on the 'Early Years Foundation Stage' and the 'National Curriculum', which includes PSHE (Personal, Social, Health, Emotional) education.

Each area of the curriculum is planned in accordance with the school's Curriculum Policy and the 2014 National Curriculum. There are subject leaders who oversee resources and methods and who are ready to answer any queries that parents may have.

### Foundation Stage

Within the Early Years Framework, the children work to achieve their Early Learning Goals. The curriculum changed in September 2021 and now comprises of three prime areas which are most essential for children's healthy development.

These three areas are:

- Communication and language
- Physical
- Personal, social and emotional development

There are also four specific areas, through which the three prime areas are strengthened and applied.

The specific areas are:

- Literacy
- Mathematics
- Understanding the world
- Expressive arts and design

### Key Stage 1 and Key Stage 2

The children's work, as they progress through the school, is developed and assessed in accordance with the National Curriculum but much of the learning is achieved through cross-curricular topics and activities.

### English

A sound and confident use of English underpins a child's progress at every stage of their education. Our aim is to develop the necessary skills whilst encouraging the child's enthusiasm and imagination in reading and writing.

Reading is given a high priority. Each class has regular reading sessions when the children hear stories and poetry read by the teacher or by fellow pupils. As the child's ability develops, the resources used are widened to provide a great variety of reading material.

We encourage parents to play an active role in their child's reading development through sharing books and reading together at home.

The children learn to write in a variety of contexts and styles – stories, letters, poems, instructions etc. – and we work to broaden their active vocabulary. Spelling, punctuation and grammar are taught throughout the school and we encourage children to learn through the process of editing and improving their own writing. We develop understanding in the spoken word and the ability to communicate clearly. In many areas of the curriculum we design activities which will increase competence and confidence in speaking and listening effectively.

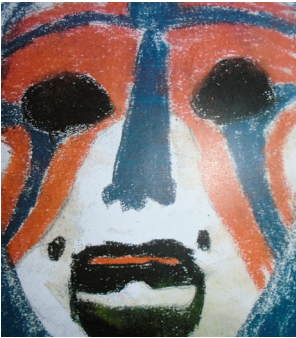
*"The school has a lovely, friendly atmosphere"*





## Mathematics

We give pupils confidence in their mathematical abilities through a sound understanding of the basic skills, at the same time encouraging enjoyment and a desire to use mathematics for problem solving. Lively, interactive teaching, using a variety of strategies is important in this work and we emphasise the use of strategies for mental calculation. It is our policy to introduce and develop the use of mathematical skills in all areas of the curriculum.



## Science

The National Curriculum has four main areas:

- Scientific enquiry
- Life processes and living things
- Materials and their properties
- Physical processes

We develop scientific skills and knowledge as well as an enquiring mind and a scientific approach to problem solving. The children are taught to interpret their findings critically and then to communicate these in a variety of ways.



## Computing

Increasingly the use of computing technology is inherent to every area of education. Nutley CE School has a fully equipped ICT room and each class has an interactive Clevertouch screen. From the start, children learn to load and use a variety of software with confidence. The school has full access to the Internet, which is always monitored. Online safety is a key priority and the children receive regular lessons to help them safely navigate our digital world.

## Religious Education

*“The school’s gentle but coherent Christian ethos is apparent in all of its work”*

Nutley CE School is a Church School and thereby promotes the values of the Christian faith, but learning about the tenets of the major world faiths and their historical contexts, gives the children the opportunity to explore and respect other beliefs and cultures. The ethos of the school reflects its emphasis on caring for one another and on listening and responding to other points of view. Every parent/carer has the right to ask for their child to be excluded from Religious Education.

## Art and Design

Art and design is a powerful learning tool and is closely linked to our cross curricular activities, drama, school visits etc. Working from practical observation, memory and imagination, children have the opportunity to express their ideas and emotions through a variety of art activities. We are proud to have been awarded the Arts Council Gold Artsmark Award.



## Geography

We aim to give children a sense of place both locally and in a worldwide context. We begin with local studies – the school, the village, the Ashdown Forest and surrounding areas and move on to people and places beyond the children’s firsthand experience. We look at geographical features, climate, environmental changes and settlements etc. thereby developing geographical and mapping skills.

## History

Through learning about history, children develop a sense of time and an understanding of events and people in the past. Our teaching focuses on certain periods and significant historical events – for example, the Battle of Britain, ancient Egypt and the West African kingdom of Benin are some of the topics covered.

## DT

This aspect of the curriculum encourages children to use and develop their practical skills and creativity. For example, the basics of sewing or woodwork are used to create a model or piece of apparatus. We then encourage children to evaluate their working methods and the finished result.

## Music

Music is an important part of our school life. Every class has music lessons which include making music with singing and a variety of instruments and listening to different types of music. We encourage children to gain confidence by performing. Music is integral to our daily worship and church service.

## Personal, Social and Health Education and Citizenship

We want our children:

- To become confident and responsible members of our community
- To make the most of their abilities
- To lead healthy and safe lifestyles
- To form good relationships
- To become active citizens
- To understand and respect differences

The values we teach are embedded in all areas of the curriculum.

Our curriculum promotes the spiritual, moral, cultural, mental and physical development of pupils at the school and it prepares pupils for the opportunities, responsibilities and experiences of life as a British citizen.

## Physical Education

The full range of class PE activities is enhanced by after school clubs. In the summer term, there is swimming for Years three and four. Our school teams have achieved great success in sports and games competitions. We recently earned the Gold Sports mark.

## Languages

Spanish is taught throughout the school. In KS2 it is taught regularly as part of the curriculum. We also begin to teach some basic words and phrases in Reception and KS1. As well as learning the language, the children find out about the culture and customs of the Spanish people.



*“Pupils are sparky, funny, bright, knowledgeable, articulate and confident”*





## Admissions

---

The East Sussex County Council makes the arrangements for the admission of children to this school at age 4+. Parents/carers who are seeking admission to the School for their child should refer to the County Council website [www.eastsussex.gov.uk/admissions](http://www.eastsussex.gov.uk/admissions) for a detailed description of the process.

The Schools Admissions Team, Education Department  
County Hall, St Anne's Crescent, Lewes BN7 1SG

**Tel: 0300 33 09 472** (10.00am – 3.00pm Monday – Friday)

However, parents/carers may find it helpful to know the current admissions criteria used for determining the allocation of places at community and voluntary controlled schools. These criteria are applied if the school is over subscribed.

- 1 Looked after children.
- 2 Children with an exceptional medical or social need for whom attendance at any other school would be inappropriate.
- 3 Children who will have a brother or sister at the school (or at a linked infant or junior school) at the time of admission.
- 4 Children wishing to transfer between a linked infant and junior school (as schools are listed in the admission booklet).
- 5 Children living within a pre-defined community area.
- 6 Children living outside the pre-defined area.

Published Admissions Limit 2022/2023: **15 places.**

First preference applications received by the closing date: **15th January 2024.**



## School Day

### Coming in to School

The school gate opens at 8.30am and children go to their classrooms for Early Learning until 8.45am when the gate is closed and the register is taken. If, for any reason, a child arrives after 8.45am until 8.55am they must, for security and fire regulations, be signed in at the School Office before they go to the classroom where they will be marked L (late before registration closes). Children arriving after 8.55am will be marked U (late after register closed) or O (unauthorised absence) depending on notifying school and the reason.

### Break Time

We suggest that children bring in a snack for break time and as a 'Healthy School' we promote the idea of a healthy snack—fruit/ a plain carbohydrate such as rice cakes. Fruit is provided free of charge to children in Reception, and Key Stage 1. We encourage children to bring a bottle of water with them to school.

### Lunch Time

The school provides a freshly prepared, cooked lunch each day.

School meals are currently free for children in Years R, 1 and 2 and for children whose parents are receiving Income Support or some other benefits. If you prefer, your child may bring a packed lunch.

### Going Home

Because a safe handover at the end of the school day is a top priority, we ask parents/carers to inform the office of any changes e.g. relatives, friends etc. to the usual arrangements for collection.

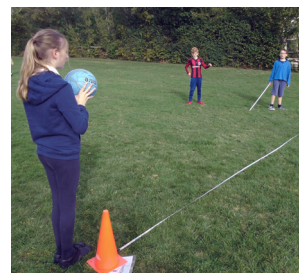
We ask those who come by car to use the Memorial Hall Car Park and the pedestrian crossing.

## Class Organisation

Class	Key Stage	Year Group	Age Years	Exit From	Collection Time
<b>Rabbits</b>	Foundation	Reception	4–5	Main Door	3.15pm
<b>Hedgehogs</b>	1	Year 1	5–6	Main Door	3.15pm
	1	Year 2	6–7	Main Door	3.15pm
<b>Foxes</b>	2	Year 3	7–8	North Gate	3.20pm
	2	Year 4	8–9	North Gate	3.20pm
<b>Badgers</b>	2	Year 5	9–10	North Gate	3.20pm
	2	Year 6	10–11	North Gate	3.20pm

### Easy Parking

There is a large free car park for the use of parents and carers, directly opposite the school. This can be safely accessed via a pedestrian crossing with traffic lights.



*“Outstanding spiritual, moral, social and cultural development”*



*“They behave very well indeed and are caring of each other”*

## Attendance

---

The curriculum and teaching at Nutley CE School are planned very carefully and any child who is absent from school will miss part of their learning. We expect, therefore, full attendance except for reasons of illness.

The Department for Education guidelines state that holidays in term time are unauthorised and the Governors of this school have fully endorsed that principle.

If in exceptional circumstances you wish to apply for your child’s absence, a form can be obtained from the School Office, which should be completed and returned at least two weeks beforehand.

## Illness

---

If your child is unable to come to school because of illness, please contact the office as soon as possible either by calling in person or by telephone (the answerphone is always available when the office is not staffed) or by using Studybugs.

If your child does not arrive at school, we cannot know whether this is due to illness or to something that has happened on the way to school. We are required to contact parents on the first day of any absence.

Please ensure that the office has an emergency contact number. Should your child become ill whilst at school, we will contact you as soon as possible. If they are too unwell to remain in school, we may ask you to collect them. Several of our staff are qualified First Aiders.

## Health Matters

---

We ask parents/carers to inform us of any medical condition their child might have and of any treatment that could become necessary in school time.

It is Local Authority regulation that parents/carers must complete a consent form (available from the Office) before we can administer prescribed medication.

## Uniform

### Nutley school branded Items for all children

(ordered and purchased through Simmonds Ltd at [simmonds-ltd.com](http://simmonds-ltd.com))

- School tie (£5.50)
- School jumper or cardigan (£18.00 – £20.50)

### Whole School Uniform (widely available from clothing retailers)

- White shirt, long or short sleeve (Reception year – white polo shirt)
- Winter (terms 1–4): dark grey trousers or pleated skirt
- Summer (terms 5–6): dark blue gingham summer dress or dark grey shorts or skirt
- Dark grey or black socks and tights
- Plain black school shoes (no embellishments, boots or sandals)

### PE Kit (required all year)

- Navy, black or dark grey shorts
- Navy, black or dark grey joggers or leggings
- Navy, black or dark grey jumper or hoodie
- House colour T-shirt (plain red, yellow, blue or green)
- Trainers

### Forest School Kit

- Waterproof trousers
- Waterproof coat
- Wellington boots
- Spare socks
- Hat and gloves

### Aprons

Every child should have an apron or similar protective garment to be kept at school for art/design and science/technology lessons.

### Book Bag

School book bag, backpack or satchel (navy/dark colour).

### PE Bag

School kit bag (navy/dark colour).

### Safety

Footwear must be sensible with flat or low heel. Canvas shoes are not permitted. Ties and shoelaces to be properly fastened to avoid injury.

### Hair

Tied back if long, with navy blue or neutral coloured elastics or scrunchie. No extreme shaved hairstyles, including tramlines. No dyed or coloured hair.

### Jewellery

Only watch and/or small ear studs. All jewellery **must** be removed for PE, including earrings.

### Make up

No make up or nail varnish to be worn.



All items should be clearly labelled

## Nutley Church of England Primary School Results 2023

### Percentage of reception children achieving a Good Level of Development (GLD)

Cohort	National	East Sussex	Nutley
8	67.3%	69.9%	<b>75.0%</b>

### Year 1 phonic screen

Cohort	National	East Sussex	Nutley
13	78.9%	76.0%	<b>69.2%</b>

### Key Stage 1 Results

Children working at or above the expected level (ARE)

	Reading Teacher assessment	Writing Teacher assessment	Maths Teacher assessment
National	68.3%	60.1%	70.4%
East Sussex	67.9%	59.3%	68.9%
<b>Nutley (11 children)</b>	<b>81.8%</b>	<b>81.8%</b>	<b>90.9%</b>

Children working above the expected level (Greater Depth)

National	18.8%	8.2%	16.3%
East Sussex	18.0%	7.0%	15.0%
<b>Nutley (11 children)</b>	<b>9.0%</b>	<b>9.0%</b>	<b>18.0%</b>

### Key Stage 2 Results

Children working at or above the expected level (ARE)

	RWM Combined	Reading Test results	Writing Teacher assessment	Maths Test results	GPS* Test results
National	59.0%	72.6%	71.5%	72.9%	72.0%
East Sussex	55.9%	71.0%	69.5%	68.4%	64.9%
<b>Nutley (12 children)</b>	<b>66.7%</b>	<b>75.0%</b>	<b>83.3%</b>	<b>66.7%</b>	<b>66.7%</b>

Children working above the expected level (Greater Depth)

National	8.0%	29.0%	13.3%	23.8%	30.0%
East Sussex	5.0%	27.6%	9.9%	17.6%	22.0%
<b>Nutley (12 children)</b>	<b>0.0%</b>	<b>16.7%</b>	<b>8.3%</b>	<b>0.0%</b>	<b>0.0%</b>

\*GPS – Grammar, Punctuation and Spelling.



## Term Dates 2024/2025

---

Monday 2 September 2024	INSET Day – <b>School Closed</b>
Tuesday 3 September 2024	Start Term 1
Friday 25 October 2024	End Term 1
Monday 4 November 2024	Start Term 2
Friday 20 December 2024	End Term 2
Monday 6 January 2025	Start Term 3
Friday 14 February 2025	End Term 3
Monday 24 February 2025	Start Term 4
Friday 4 April 2025	End Term 4
Tuesday 22 April 2025	Start Term 5
Friday 23 May 2025	End Term 5
Monday 2 June 2025	Start Term 6
Tuesday 22 July 2025	End Term 6

## Nutley CE School Creed

---



*This is our school  
Let peace dwell here  
Let the room be full of contentment  
Let love abide here  
Love of one another  
Love of mankind  
Love of life itself  
And love of God  
Let us remember  
That as many hands build a house  
So many hearts make a school*

## Contact

---

Headteacher: **Mrs Emma Robinson.**  
Chair of Governors: **Dr Birgit Smith.**

Nutley Church of England Primary School.  
High Street, Nutley, East Sussex TN22 3NW.

Tel: 01825 712 575.

Email: [office@nutleyce.e-sussex.sch.uk](mailto:office@nutleyce.e-sussex.sch.uk)

[www.nutleyprimaryschool.org.uk](http://www.nutleyprimaryschool.org.uk)



Nutley Church of England Primary School.  
High Street, Nutley, East Sussex TN22 3NW.

Tel: 01825 712 575. Email: [office@nutleyce.e-sussex.sch.uk](mailto:office@nutleyce.e-sussex.sch.uk)

[www.nutleyprimaryschool.org.uk](http://www.nutleyprimaryschool.org.uk)

